

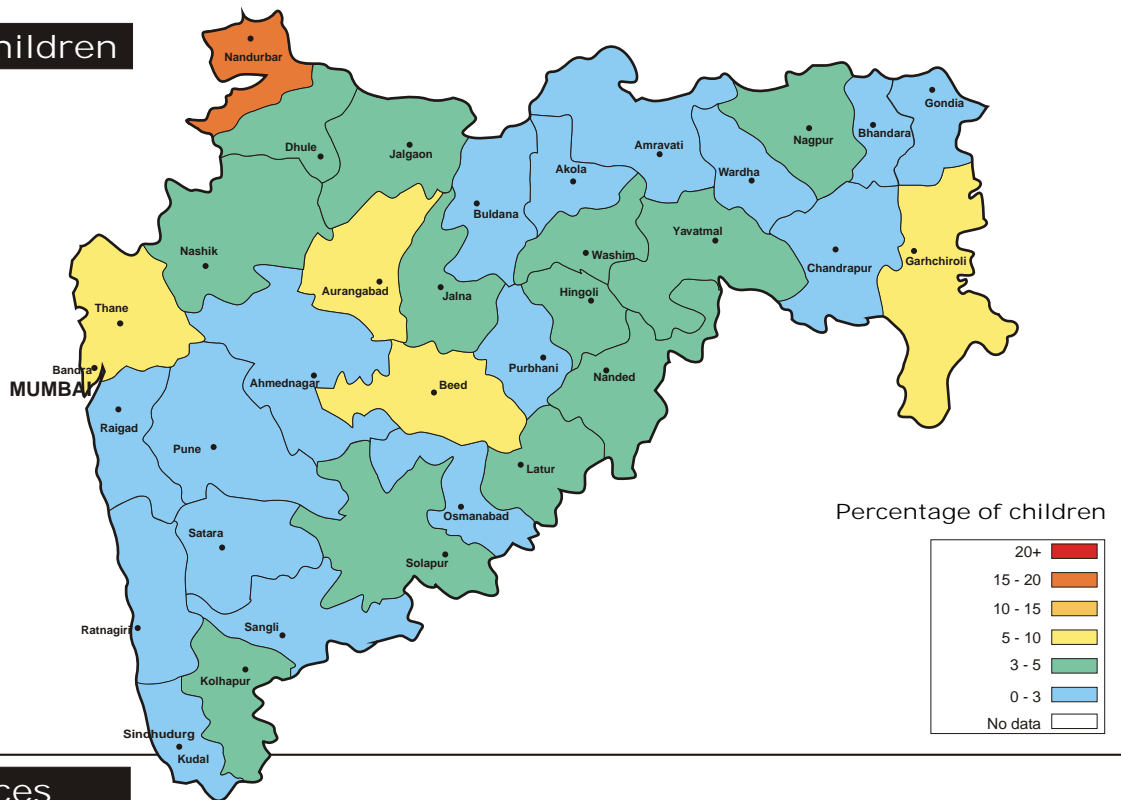
# MAHARASHTRA RURAL

All analyses based on data from 33 out of 33 districts

## Enrollment

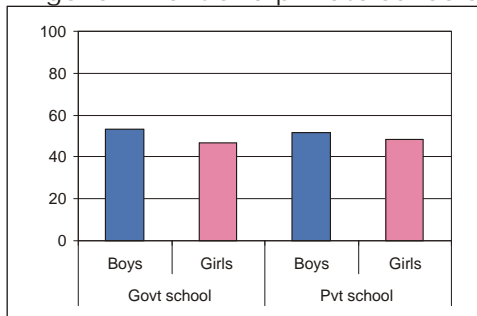
	% Children in different types of schools				% Children not in school		Total
	Government	Private	Madarsa	EGS	Never Enrolled	Drop Out	
Age : 6-14 ALL	78.1	18.2	0.3	0.6	0.8	2.0	100
Age : 6-10 ALL	90.5	7.3	0.3	0.4	0.8	0.7	100
Age : 11-14 ALL	59.1	34.9	0.4	0.9	0.9	3.9	100
Age : 6-10 BOYS	90.5	7.4	0.3	0.4	0.8	0.7	100
Age : 6-10 GIRLS	90.6	7.2	0.3	0.4	0.9	0.7	100
Age : 11-14 BOYS	59.9	34.4	0.4	0.9	0.7	3.7	100
Age : 11-14 GIRLS	58.2	35.6	0.4	0.9	1.0	4.1	100

## Out-of-school children

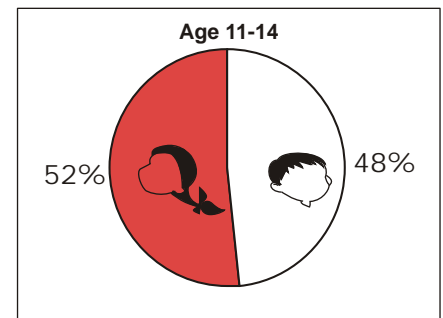
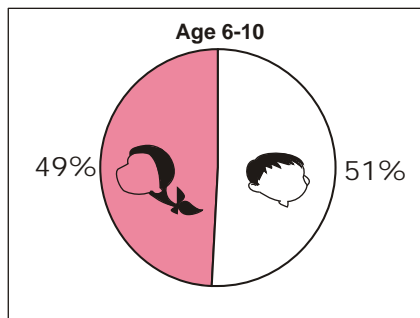


## Gender differences

Percentage of boys and girls in government and private schools



Out-of-school children: Proportion of girls and boys.



**Learning**

	% Children who CANNOT read ...		% Children who CANNOT solve numerical written sums of ...	
	Level 1*	Level 2**	Subtraction or Division	Division
Age : 7-14 ALL	27.6	45.8	46.1	71.2
Age : 7-10 ALL	39.2	61.0	57.9	84.6
Age : 11-14 ALL	12.6	26.3	30.8	54.1
Govt : Std II-V	32.6	55.8	52.2	81.3
Pvt : Std II-V	23.9	44.1	44.0	72.4
Govt : Std VI-VIII	7.6	20.1	25.2	47.4
Pvt : Std VI-VIII	7.1	17.6	25.3	47.5

\* Level - 1: Ability to read a small paragraph with short sentences of std 1 level difficulty.

\*\*Level - 2: Ability to read a 'story' text with some long sentences of std 2 level difficulty.

Subtraction:  
2 digit subtraction with borrowing.

Division:  
3 digit divided by 1 digit.

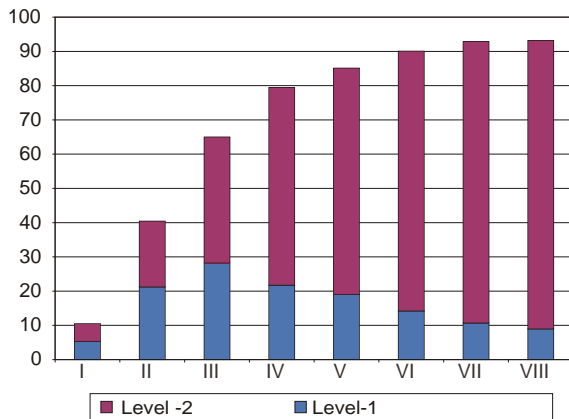
**Learning curves**

Children who CAN read and solve numerical written sums

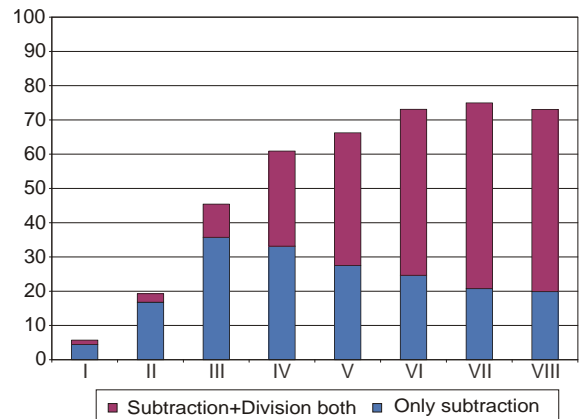
Reading

Arithmetic

% All school children who can read-standardwise



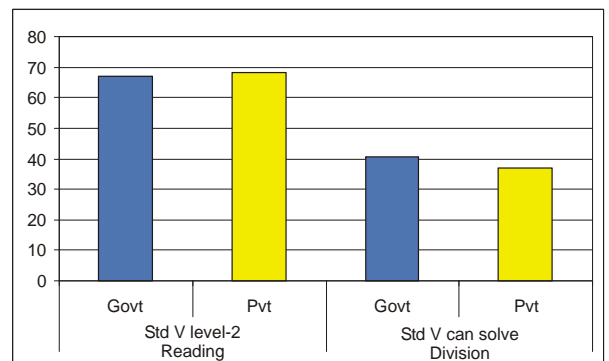
% All school children who can solve written numerical sums - standardwise



Performance of top five and bottom five districts in state based on % all children Std V

Reading	% Std V CANNOT read 2	Arithmetic	% Std V CANNOT solve division
<b>Top - 5</b>		<b>Top - 5</b>	
Sangli	13.2	Ratnagiri	28.0
Raigarh	13.7	Sangli	28.3
Satara	15.7	Sindhudurg	36.6
Ahmednagar	16.3	Buldhana	37.0
Chandrapur	16.7	Ahmednagar	38.4
<b>Bottom - 5</b>		<b>Bottom - 5</b>	
Nandurbar	60.3	Amravati	89.2
Jalgaon	57.1	Nandurbar	87.0
Parbhani	55.6	Aurangabad	84.7
Aurangabad	55.6	Dhule	84.5
Beed	53.3	Nashik	84.3

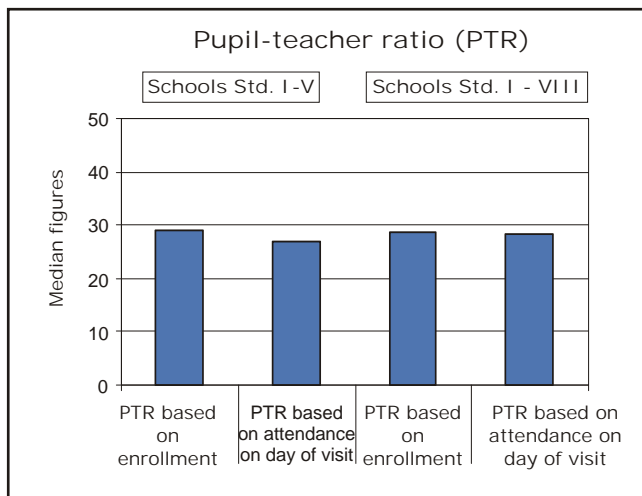
Comparison of government and private schools based on % Std. V children who CAN read level-2 and solve written numerical sums



Teachers, children, and classrooms

Teachers' attendance		
	Schools with:	
	Std. I-IV/V	Std. I - VIII
Total number of schools visited	299	333
% teachers attending (average)	84.9	82.3
% of schools with NO teachers present	6.4	6.9
% of schools with ALL teachers present	62.2	45.9

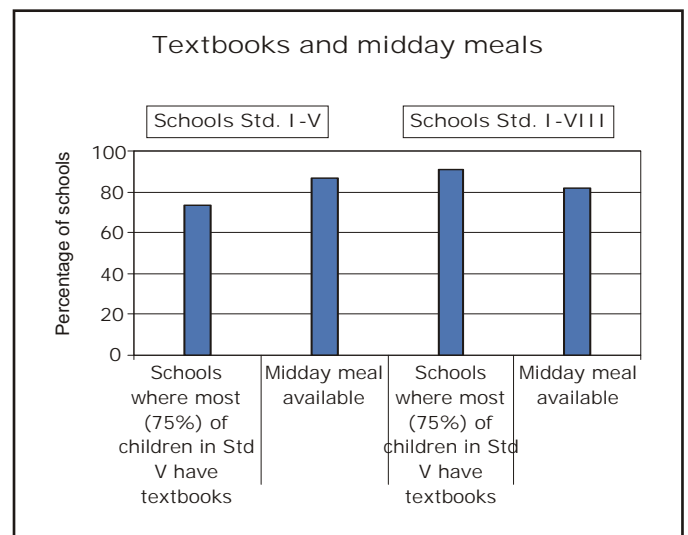
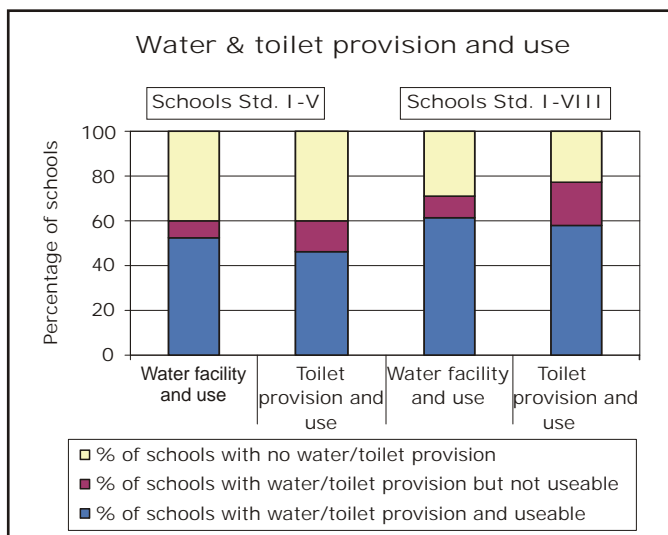
Children's attendance		
	Schools with:	
	Std. I-IV/V	Std. I - VIII
Total number of schools visited	307	344
% enrolled children attending (average)	82.2	82.5
% of schools with less than 50% of enrolled children attending	5.5	3.8



Average number of rooms available

Type of school by enrollment	% Schools visited	Std I-V rooms	Type of school by enrollment	% Schools visited	Std I-VIII rooms
<=50	9	2.5	<=150	21	5.0
51-75	13	2.9	151-250	43	7.0
76-150	46	4.8	251-350	20	8.7
151-225	24	5.8	351-450	9	10.6
>225	8	9.6	>450	7	14.0

Provision and use



Performance of all districts

District	All Children	Std V children		District	All Children	Std V children	
	% Out-of-school	% CAN read level - 2	% CAN solve division and subtraction		% Out-of-school	% CAN read level - 2	% CAN solve division and subtraction
Ahmednagar	1.6	83.7	61.6	Nanded	2.8	60.4	31.3
Akola	0.3	55.6	21.9	Nandurbar	16.4	39.7	13.0
Amravati	1.4	51.4	10.8	Nashik	2.4	50.0	15.7
Aurangabad	5.7	44.4	15.3	Osmanabad	0.2	66.7	34.6
Bhandara	0.8	64.9	18.9	Parbhani	1.2	44.4	29.6
Beed	6.5	46.7	22.0	Pune	1.9	70.2	59.5
Buldhana	0.4	71.7	63.0	Raigarh	1.8	86.3	32.9
Chandrapur	1.0	83.3	20.8	Ratnagiri	1.3	78.0	72.0
Dhule	3.0	54.2	15.5	Sangli	0.7	86.8	71.7
Gadchiroli	6.2	65.3	20.4	Satara	1.7	84.3	61.0
Gondiya	0.2	56.6	23.7	Sindhudurg	0.3	75.5	63.4
Hingoli	4.7	65.9	30.8	Solapur	4.2	70.3	46.9
Jalgaon	2.6	42.9	30.4	Thane	7.2	57.1	23.2
Jalna	2.2	61.4	43.4	Wardha	0.7	72.9	39.0
Kolhapur	2.2	80.0	33.3	Washim	2.8	71.9	48.4
Latur	3.5	70.1	40.3	Yavatmal	4.1	55.4	35.1
Nagpur	2.0	50.8	18.2	Maharashtra State	2.8	66.1	38.7

